

# HARTWICK

17.11.03



EURO SIDE LOAD

M-2.0C

# HARTWICK

17.11.03



## AREAS

<b>Heated Area</b>	
1st Floor	1355 SF
Livable	
2nd Floor	1615 SF
Livable	
	2970 SF
<b>Unheated Area</b>	
Garage	440 SF
	440 SF
<b>Total</b>	<b>3411 SF</b>

VIRGINIA VINTAGE

M-1.0D

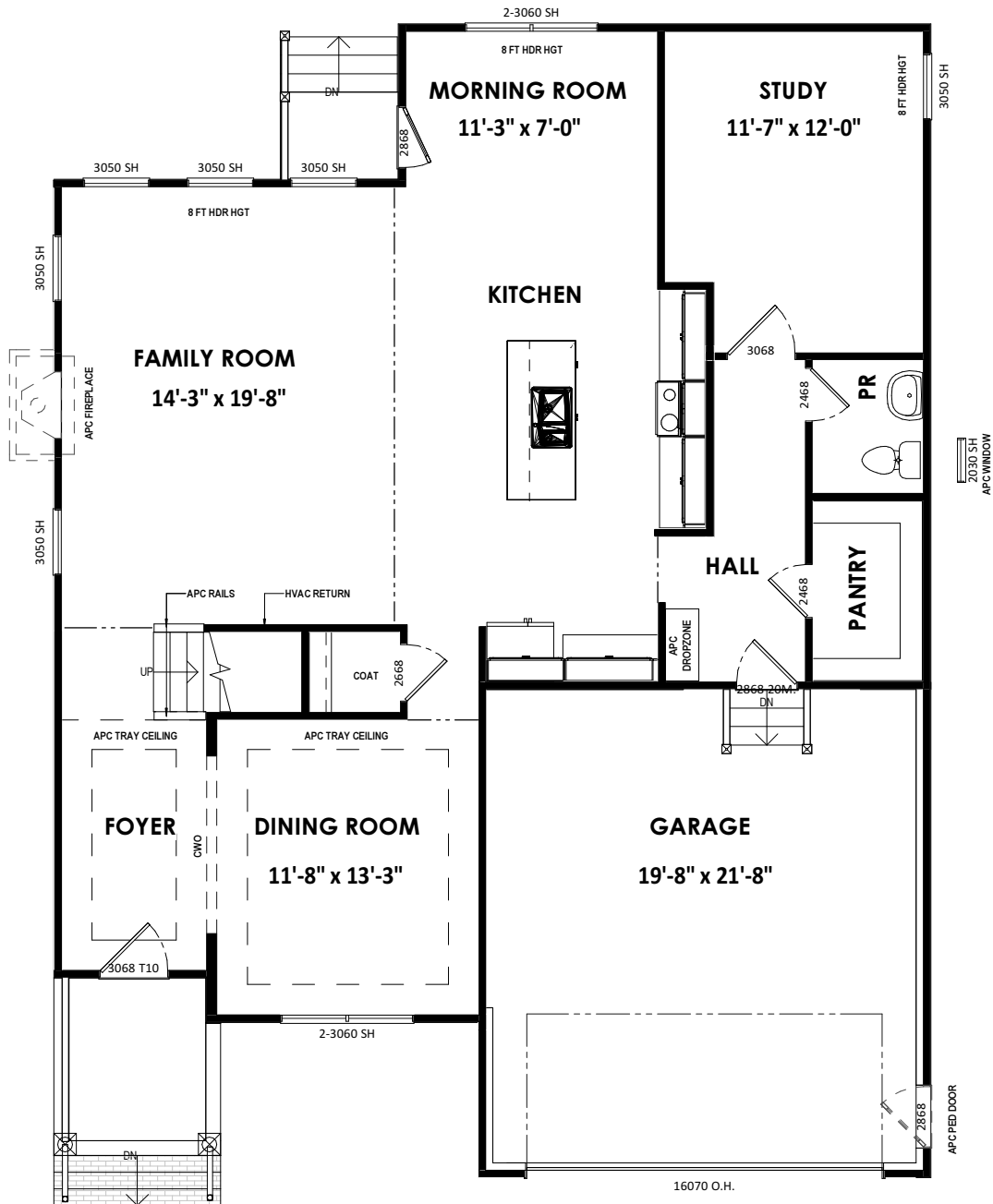
# HARTWICK

17.11.03



# HARTWICK

17.11.03

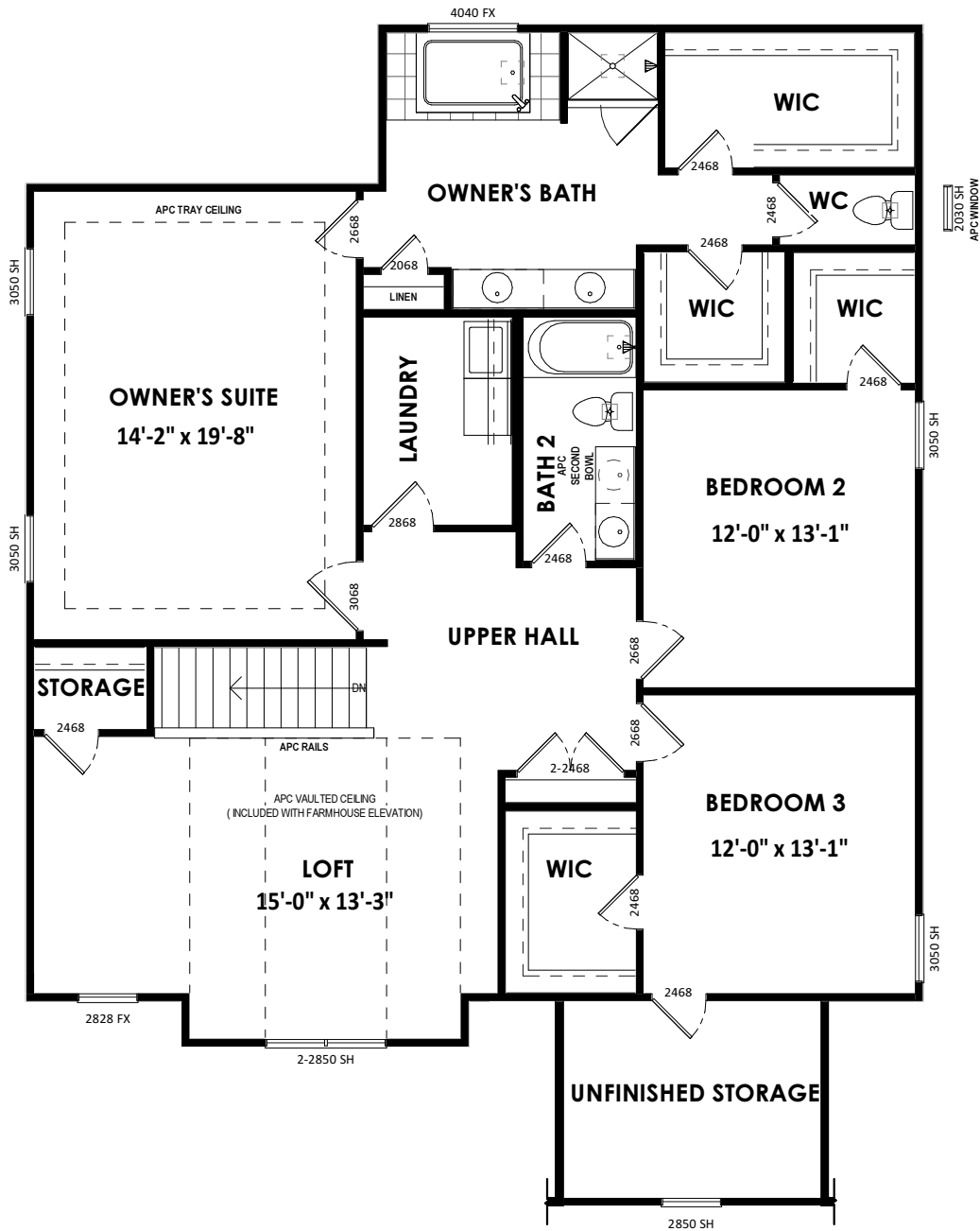


FIRST FLOOR

M-2

# HARTWICK

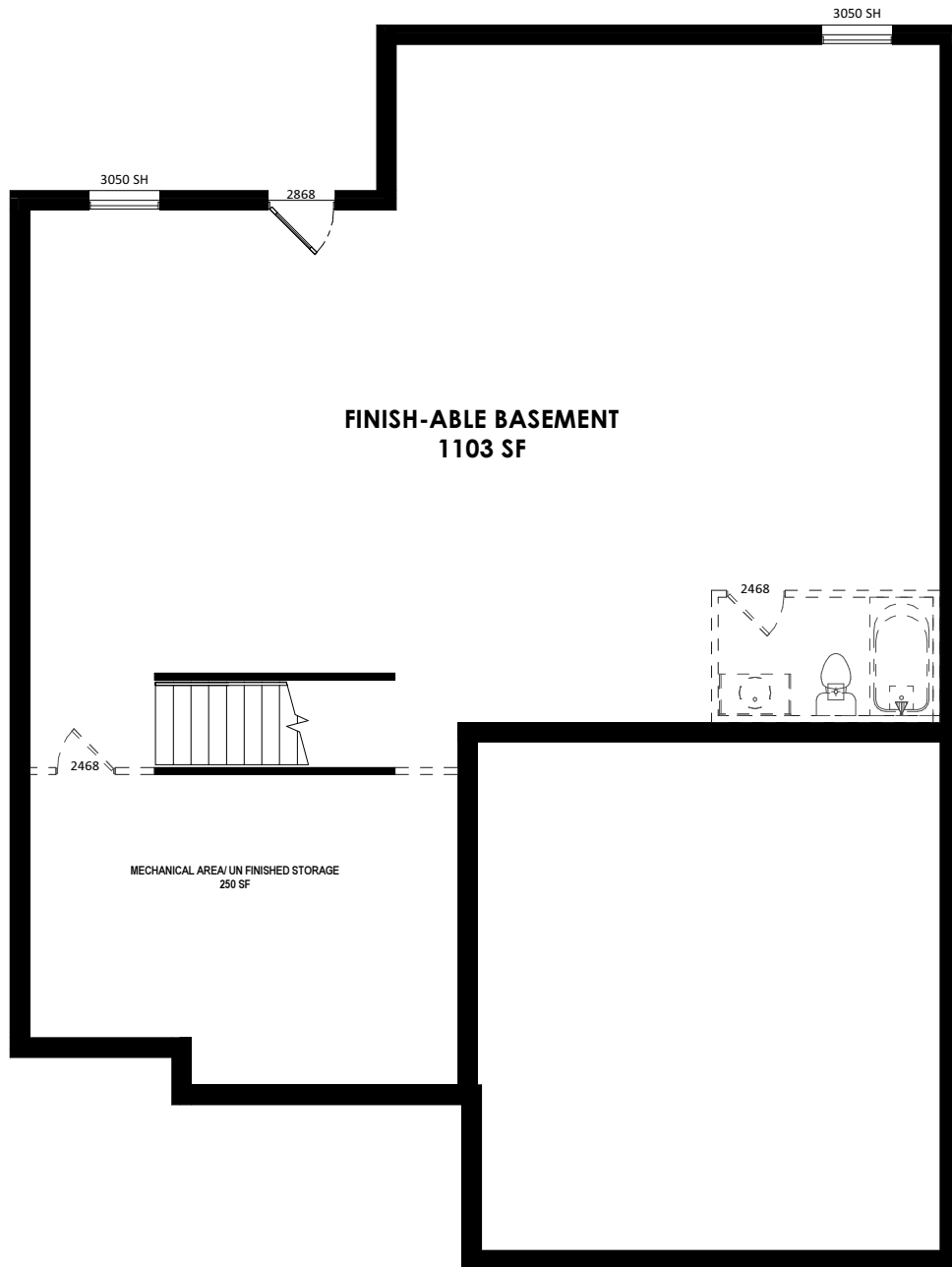
17.11.03



SECOND FLOOR

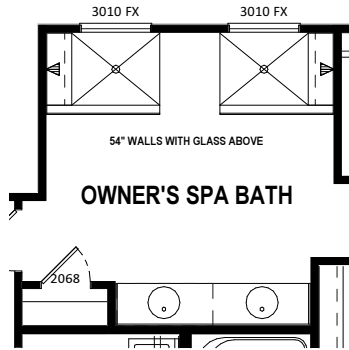
M-3

17.11.03

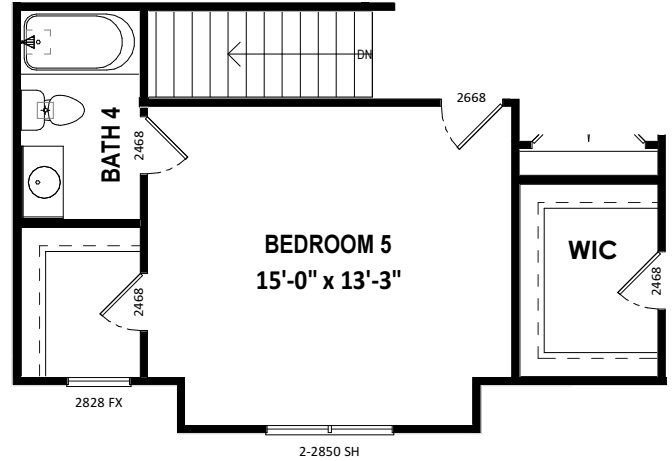


# HARTWICK

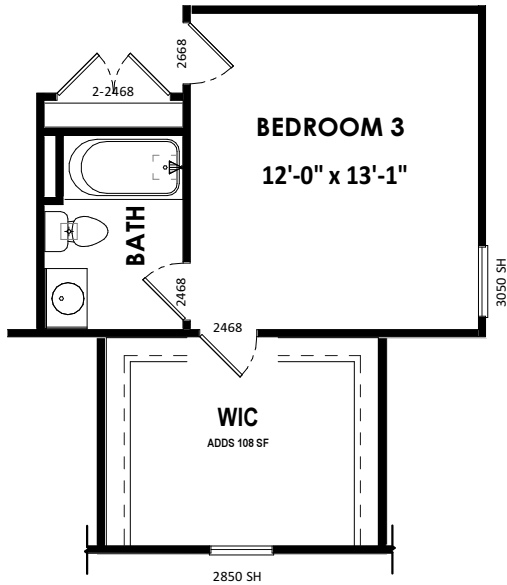
17.11.03



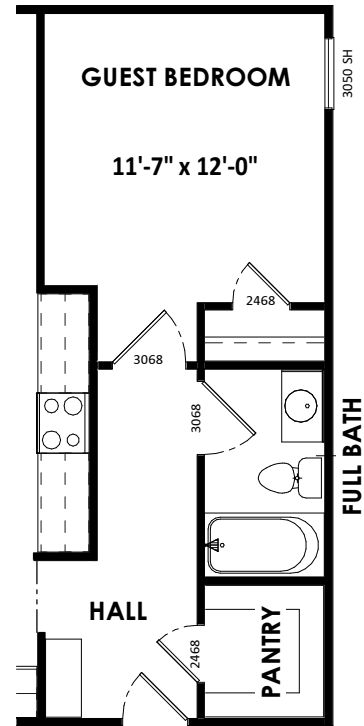
**SPA BATH**



**BEDROOM 5 WITH BATH**  
(ILO LOFT)



**BEDROOM 3 WITH BATH**



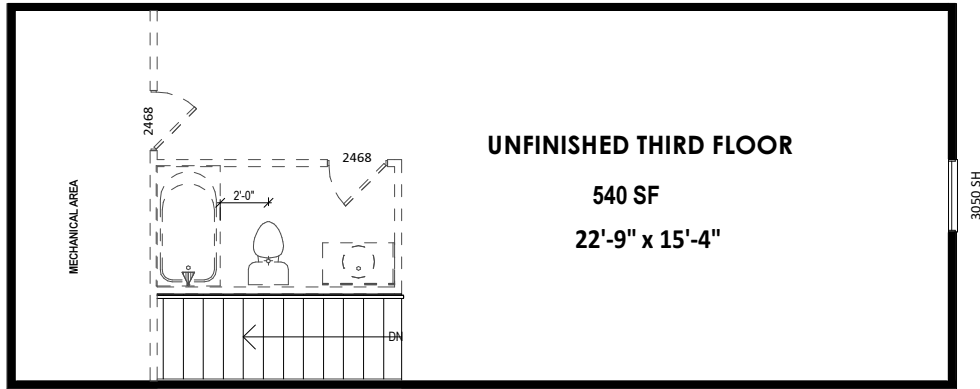
**GUEST BEDROOM**

Options

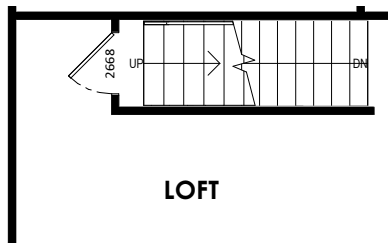
M-3.0

# HARTWICK

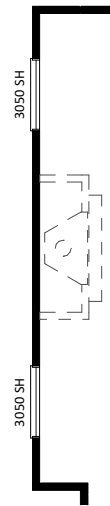
17.11.03



NOT AVAILABLE WITH  
BEDROOM 4 LAYOUT



THIRD FLOOR STAIRS



2 FT E EXTENSION AT FAMILY ROOM